

Cybermed Digital Solution Ver 1.0

To be a Global Digital Implant Provider, enabling true digital implant treatment.

Cybermed, founded in 1998, is a hidden champion leading digital technology and is the first in Korea to develop a human body modeling using medical images and 3D printing, 3D medical imaging software, and surgical navigation system.

Cybermed has acquired KFDA, FDA, and CE marking by developing precise surgical guide systems and implants as well as diagnosis and treatment planning through medical images based on advanced digital technology and clinical data accumulated over 20 years.

We are focusing on more accurate and safe treatment through AI-based digital medical technology, including AI-Deep Learning to help with accurate diagnosis and optimal treatment planning, surgical guides and prosthetic systems that can be manufactured directly before the procedure in the dental clinic, and implant design and surface for various patient conditions.

Digital Dentistry Solution Company

Providing complete digital solutions is the promise between CyberMed and our dear customers. Our products and technologies are developed to meet the needs of our customers so that they can be used with confidence for both patients and customers.



AI Technological
Capabilities for the Future



Innovation
Institute of Technology Innovation



Together
with Customers

Cybermed will continue our challenge in realizing a perfect digital treatment.

2020

Clean implant process

2019

Obtained CE
Acquired CE marking for implants

2018

Developed CORE1 Implant System
Launched CORE1 Implant
Obtained KFDA | Acquired KFDA approval

2016

Daejeon HQ | Established Daejeon Headquarter
Implant and Software R&D Center

2015

EnvisionTEC | Signed 3D printer global partnership agreement
Joint development of Lux HD LED Dental 3D Printer (Cubicon, Korea)

2014

In2Guide Lab Service
Lucent Dental Art Center
Established Design Center for Digital Dental Solutions

2010

In2Guide™
Surgical guides and prosthetic solutions for implant surgery

OnDemand3D in US | Incorporated U.S. corporation
Stratasys Objet | Signed 3D printer global partnership agreement

2007

OnDemand3D™
Developed the world's best CBCT 3D imaging diagnostic software (No. 1 in global market share)

2005

In2Vision™
Developed Asia's first image-guided surgical system for neurosurgery and orthopedics (stereotaxic system)

2004

CB-Works™
Developed CBCT manufacturer customized 3D image viewer software

2000

V-Works™
Developed Korea's first dental 3D image viewer software

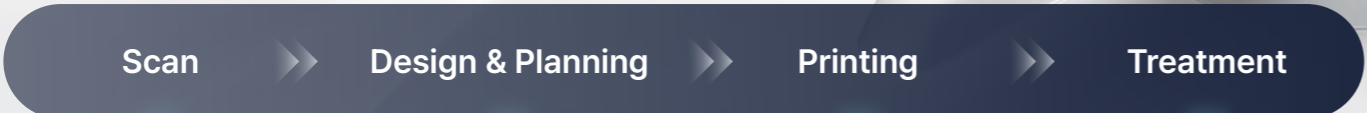
1998

Cybermed Inc. | Established CyberMed Inc.
Surgical Replica Service
CT image-based 3D printing surgical model service

Through Cybermed's digital solution, you can reduce surgery times and achieve accurate diagnosis.

Cybermed Digital Dental Solution

Cybermed provides efficient, easy and optimal solutions through a variety of products and technologies. Experience accurate and fast treatment through digital workflow.



Intra Oral Scanner

OnDemand3D

OnDemand3D Printer

CORE1 Implant

CBCT
Our Imaging Partners

In2Guide

Wash / Cure Machine

CORE Surgical KIT



OnDemand3D

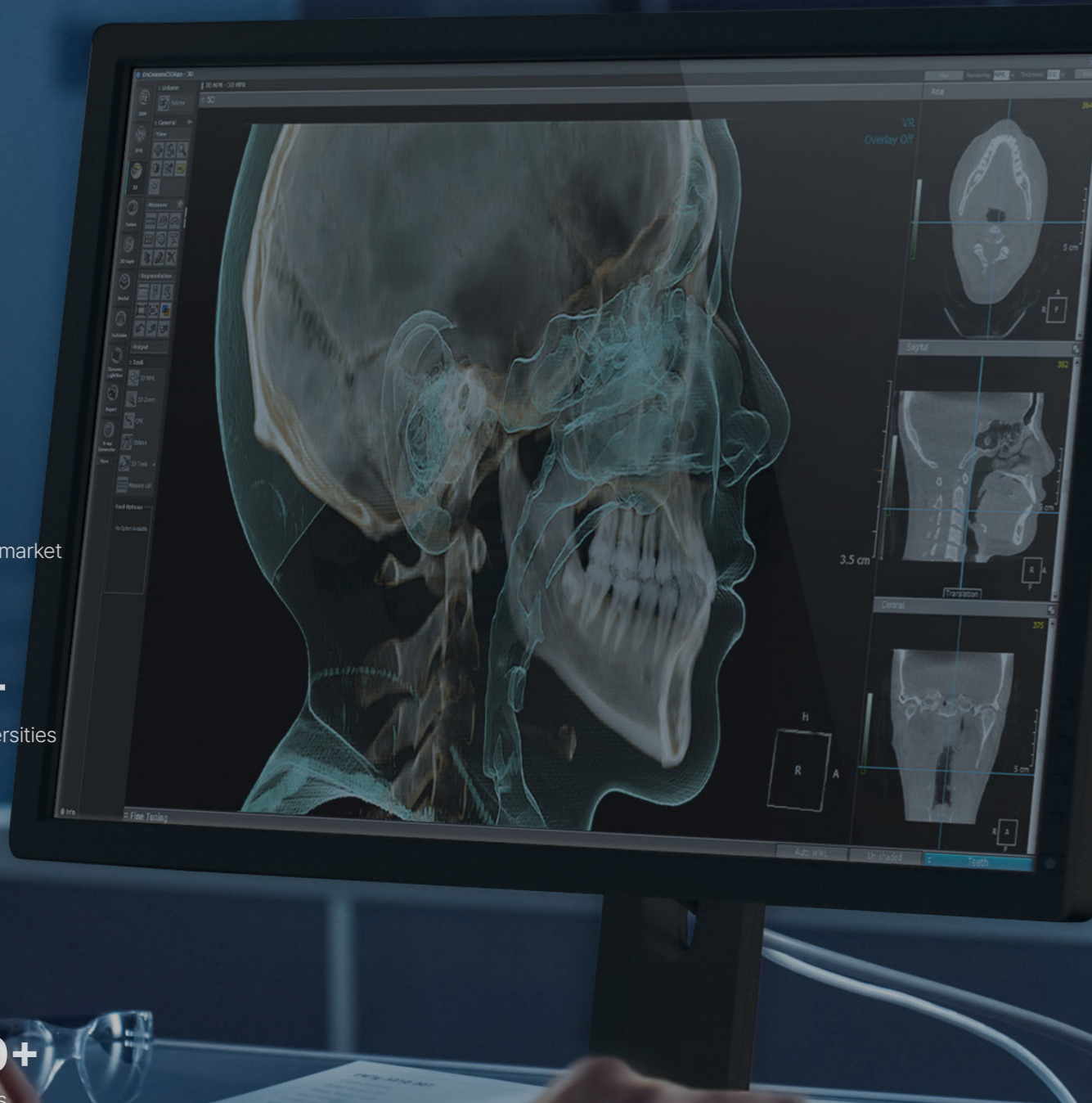
The beginning of your complete 3D Dental imaging solution OnDemand3D

20+
Years in the market

200+
Global Universities

20+
Countries

2000+
Dissertations



Why OnDemand3D?

OnDemand3D provides specialists with various functions such as oral diagnosis, implant surgery simulation, orthodontic treatment, and comparative analysis before and after surgery to provide the best medical service to doctors and patients.

Convenient database management

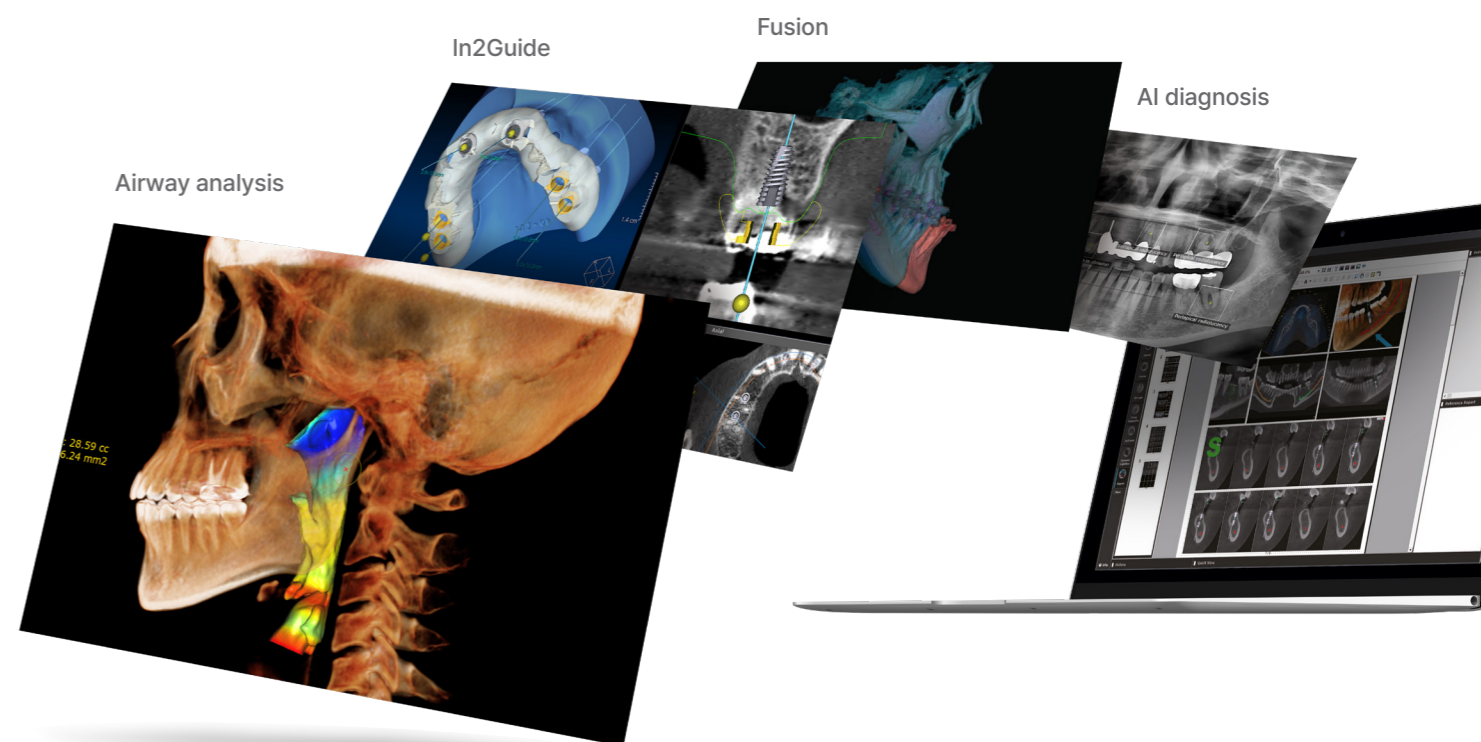
By linking user's OnDemand3D application database with OnDemand3D server and PACS server, you can efficiently upload and download DICOM format data and use of that.

Accurate diagnosis and analysis

It provides various functions such as high-definition 3D rendering for accurate diagnosis and analysis of patients, comparison before and after surgery, orthodontic diagnosis, and implant simulation.

Virtual simulation with digital planning

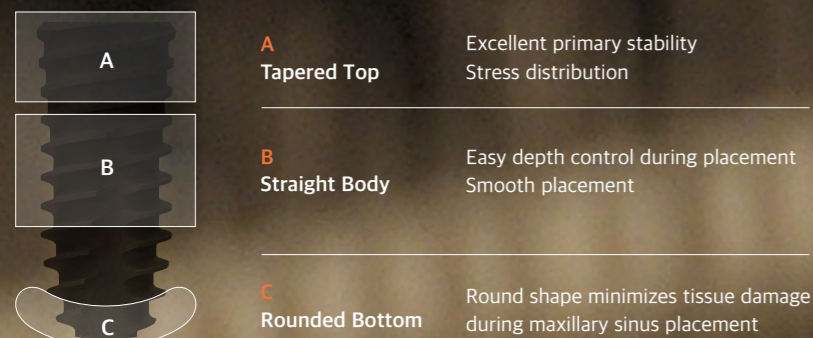
OnDemand3D's digital planning provides a variety of implant libraries to enable realistic simulations, and prevents unexpected situations during surgery through professional functions.



CORE 1

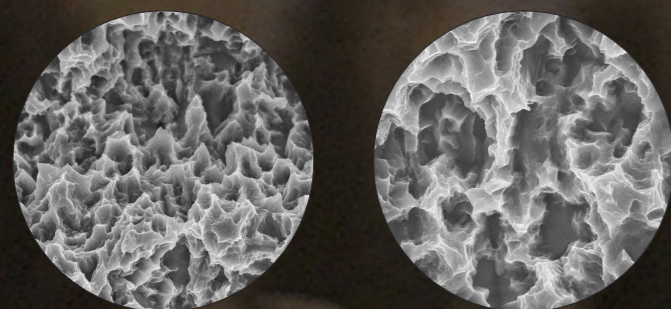
A Proven CORE Implant Systems For Digital Implant Solution

CORE1 Shape



CORE1 SLA Surface

Application of SLA surface with excellent bone response
SLA surface with optimal morphology and roughness
SLA Surface similar to overseas company S and domestic company O, which are major domestic and overseas implant companies



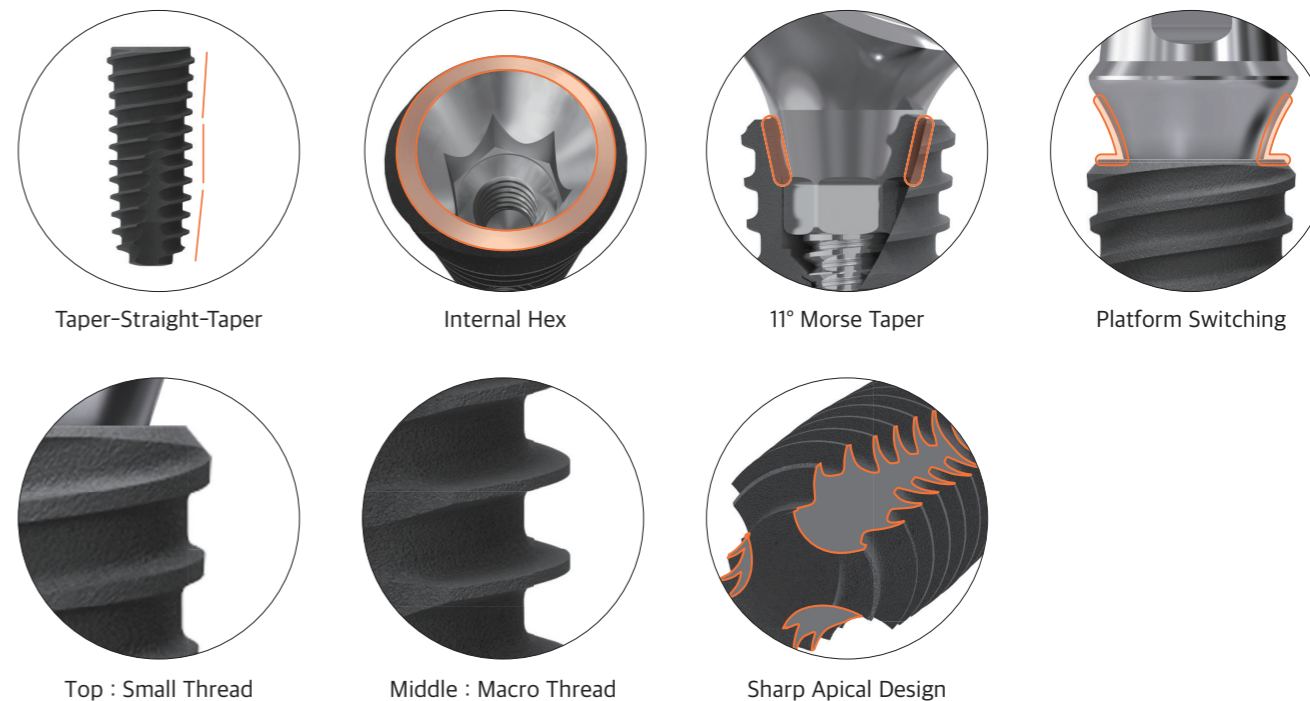
×2000

×4000

Proven CORE Implant System for digital care solutions

Cybermed provides high-quality implants with excellent features in material and design through years of experience in implant development.

CORE1 Feature



CORE1 Specification

Fixture						
Nominal Diameter	3.0	3.5	4.0	4.5	5.0	6.0
A	3.3	3.8	4.35	4.65	5.0	6.0
B	8.5 / 10.0 / 11.5 / 13.0		7.0 / 8.5 / 10.0 / 11.5 / 13.0			7.0 / 8.5 / 10.0
C	2.1		2.5			

More intuitive, More concise

CORE Surgical KIT

A Proven CORE Implant Systems
For Digital Implant Solution



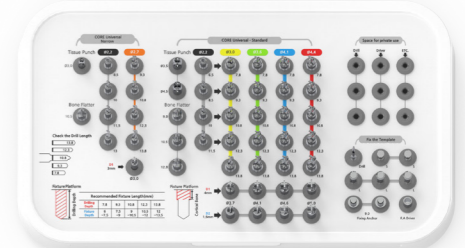
CORE1 Guide KIT

- Guide Kit for accurate and convenient placement of our own fixtures using intrinsic planning software
- Drilling sequence that is simple, intuitive, and can apply various offsets



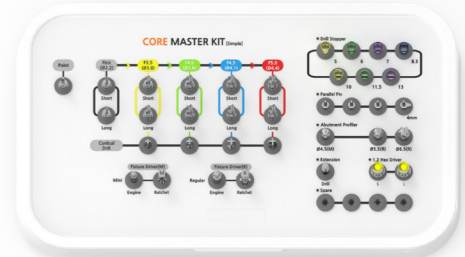
CORE Universal Guide KIT

- Guide Kit that allows selection of a drill corresponding to the type of fixture used by the user
- Various offsets are applicable (9/10.5/12mm)



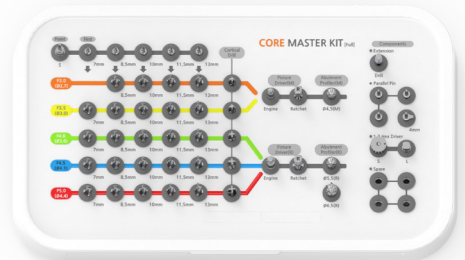
CORE Master KIT (Simple)

- Procedure Kit for placing our own fixtures with a simple configuration
- Secured ease of use by selecting a suitable stopper or laser marking for the implantation depth of the fixture
- Secured visibility by applying color by stopper length



CORE Master KIT (Full)

- Procedure Kit for placing our own fixtures that consists of drills according to the diameter and length of the fixture.
- Components configuration for ease of use



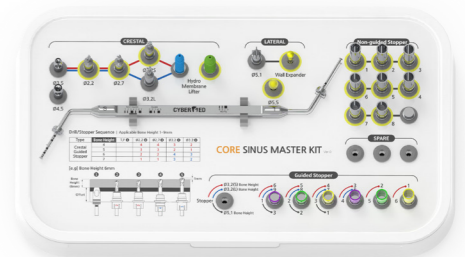
CORE Prosthetic KIT

- Universal Prosthetic Kit with improved surgical convenience due to universal compatibility
- Both domestic and overseas prosthetic cases can be applied with Unigrip and SCS Drivers in addition to Hex Driver
- Angled Hex Driver configuration for cases requiring anterior and angles



CORE Sinus Master KIT

- The only integrated Sinus Kit in Korea capable of guided and non-guided treatment
- Precise positioning can be achieved as it allows sinus elevation and fixture placement with the guide attached
- Designed Curette for free membrane separation and elevation



OnDemand3D Printer

For Digital Dentistry
by Cybermed

Best-in-class print speed and resolution

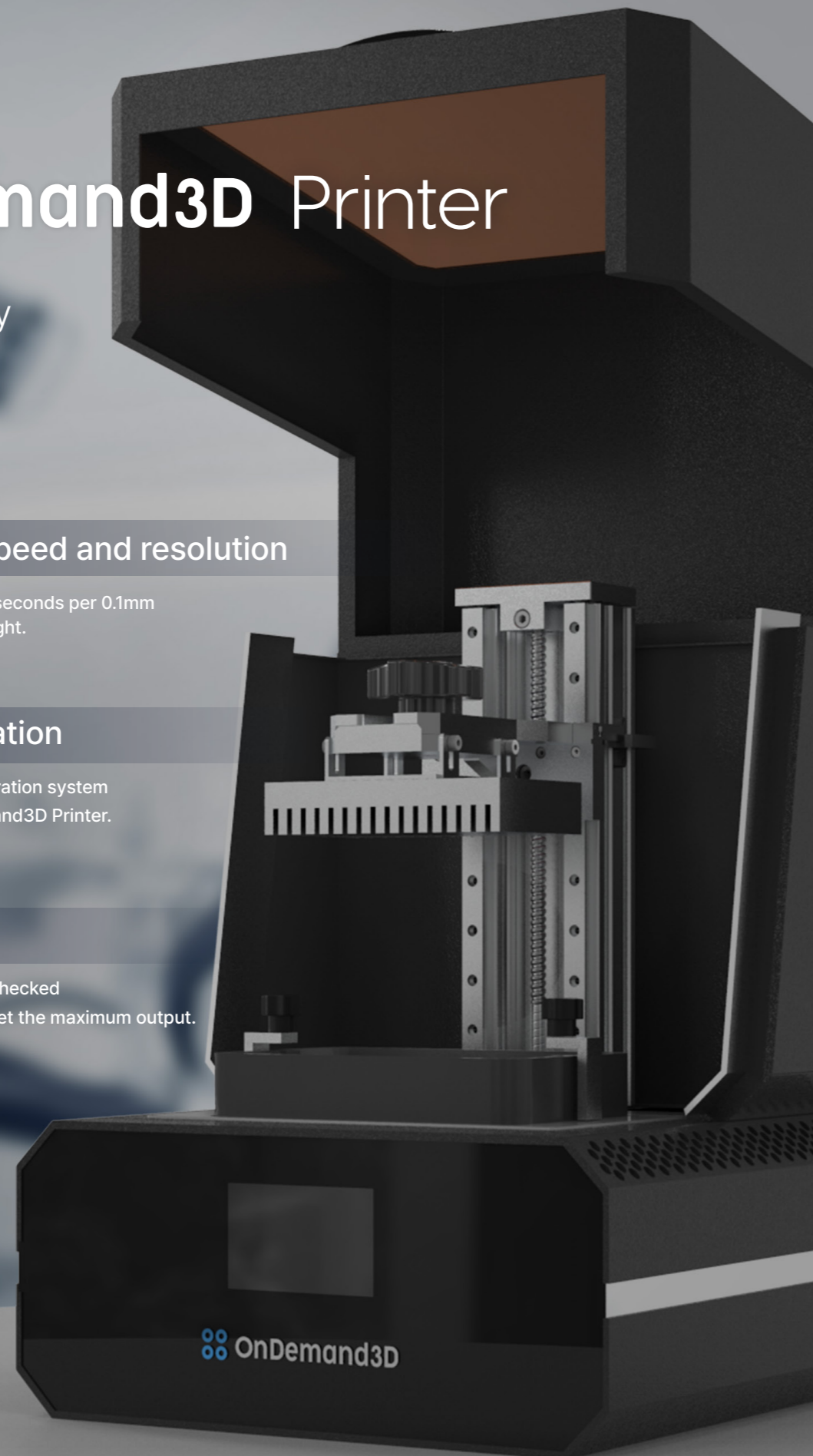
It is completed in a maximum of 2.5 seconds per 0.1mm radar at high speed with abundant light.

Convenient manipulation

It is equipped with a convenient operation system with dedicated software for OnDemand3D Printer.

Stability

Thermostatic system can easily be checked and the voltage can be supplied to get the maximum output.



For Digital Dentistry, OnDemand3D Printer

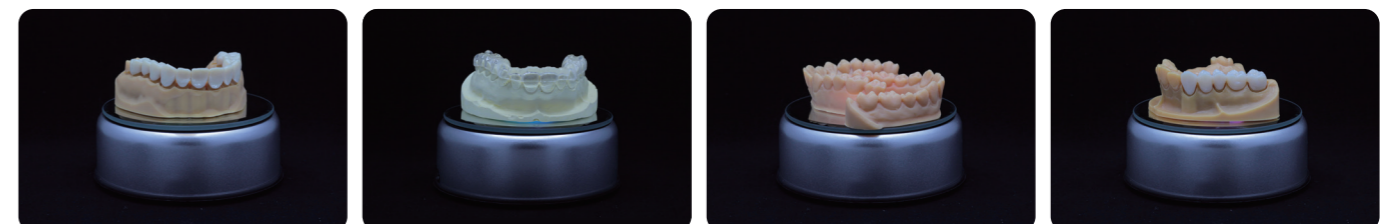
Cybermed's first OnDemand3D Printer was exclusively designed and developed as a dental device with user convenience and stability that was not previously available. It provides more convenient and less burdensome 3D printing solution and allows all dental workers to easily access digital dentistry through differentiation from the conventional industrial 3D Printer.

Product Specification

Item	Specifications
Type	Monochrome LCD 6.1inch
X-Y Resolution	2560 × 1620 / 2K (XY 51μm)
Z Resolution	20μm ~ 200μm
Building Size	X 82mm Y 130mm Z 150mm
Light Source	405nm Arrayed LED / 80W
Build Plate Type	Leveling Free / Channel Plate
Machine Dimension	W 330mm D 300mm H 470mm
Heating	Auto Heating Chamber / Light sensor
Weight	17kg
Power	AC 110~220, 350W

OnDemand3D Printing Application

Guide stent for implant surgery, Temporary crown, Model, Model for clear aligner, Clear Alinger, Denture base, etc.



THE EASY ENTRY INTO
DIGITAL DENTISTRY

*i*500



Our Intraoral Scanner Delivers: **Value, Efficiency, and Productivity**

Together, these three qualities make it easy to incorporate our intraoral scanner into your workflow.

Designed with quality in mind, we created the i500 to add value to your practice. Regardless of specialization the i500 ensures that professional needs are met, workflows are optimized, and flexibility is guaranteed.



Small tip

Simpler maneuverability and improved patient comfort while scanning are the advantages of i500's small tip



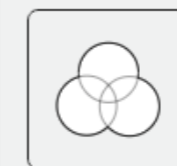
Single button control

No need to reach for the computer as the user can start, stop, and move to the next scanning stage by pressing a single button on the device



High resolution

Easy to locate margin lines and undercuts as well as distinction between tooth structure and soft tissue thanks to realistic high-resolution images



Vivid color

3D full color streaming capture for precise scans and detail-rich images



Video type

3D-in-motion video technology that allows for rapid video-based scans without worrying about choppy results



Light weight

Our i500 intraoral scanner only weighs 280 grams and is exceptionally easy to hold, making the scanning process comfortable

www.cybermed.co.kr

Inquiry **02.6959.1553**

CYBERMED DIGITAL DENTAL SOLUTION Ver 1.0

©Cybermed Inc. 2021 All rights reserved.